

## Surface Tension Report

Aim :

To discover which type of water will best adhere to a 100 yen coin.

Hypothesis:

That the tap water will best stick to the Y100 coin

Independent variables:

Four *different water mixtures*

Dependent variable:

The number of drops of the different water mixtures that a 100 yen coin can hold.  
size of coin

Controlled variable:

A dry 100 yen coin

Materials/Apparatus:

dropper

bowl of water

100 yen coin

flat surface

Method:

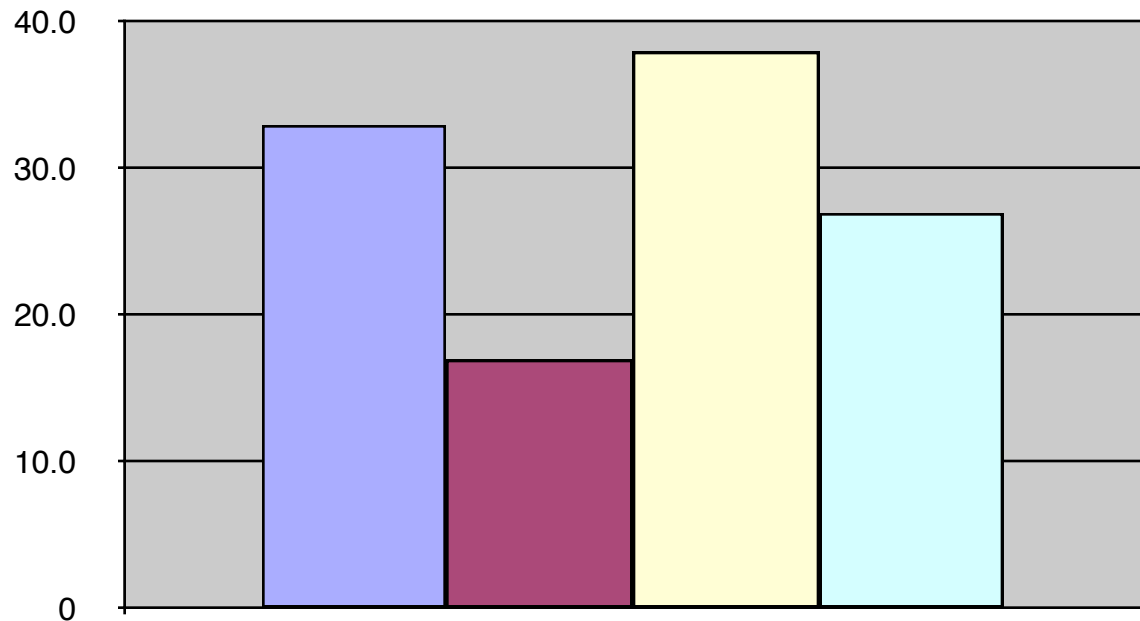
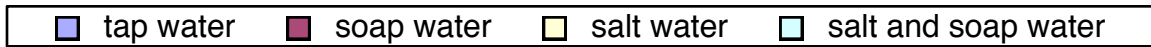
1. Put a 100 yen coin on flat surface
2. place tiny drops of water on the 100 yen coin, counting each drop
3. record the number of drops
4. Clean and dry coin and repeat with different water mixture

Data collection:

*(put your table here. Include headings and units on the table)*

	number of drops
tap water	33
soap water	17
salt water	38
salt and soap water	27

Data processing:



The number of drops the 100yen coin held

Conclusion:

I think that the soap water held the least because it is the thickest.

Evaluation:

We could improve to be organized more.